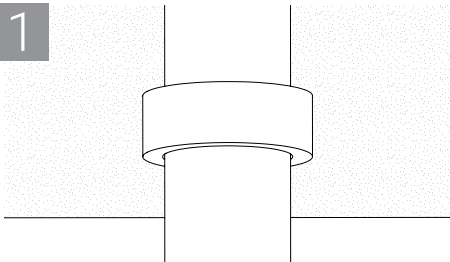


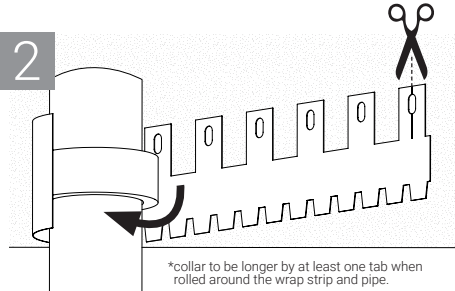
SpecSeal[®] Series SSW Wrap Strip
(Part No. SSWRC & SSWRC2)

1



Install wrap strip layer(s) around penetrant. The wrap strip is held together with tape. See UL System for wrap strip requirements

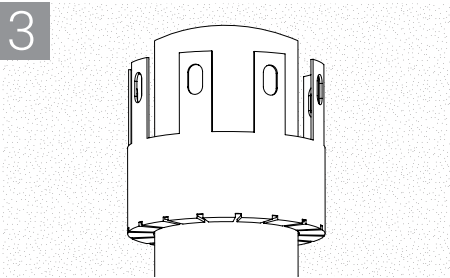
2



*collar to be longer by at least one tab when rolled around the wrap strip and pipe.

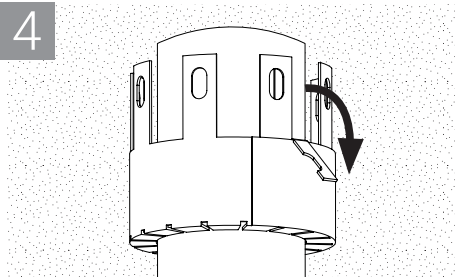
Cut collar steel to length. Cut last tab of restraining steel and install around pipe/wrap strip.

3



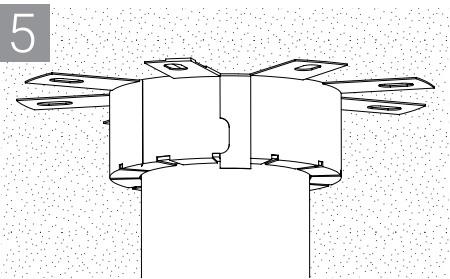
Bend retaining tabs, at bottom, towards pipe as shown.

4



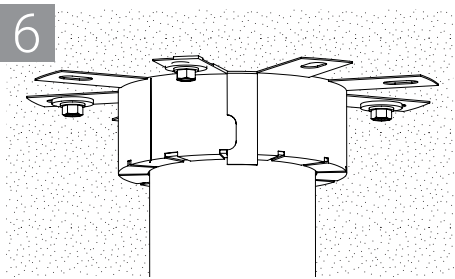
Fold cut tab away from pipe as shown.

5



Hook bent tab around anchor tab on other end of collar and bend down as shown.

6



Fasten anchor tabs to underside of floor or both sides of the wall. See UL System for fastener and tab requirements.

